



The Aspen

ELEVATION A

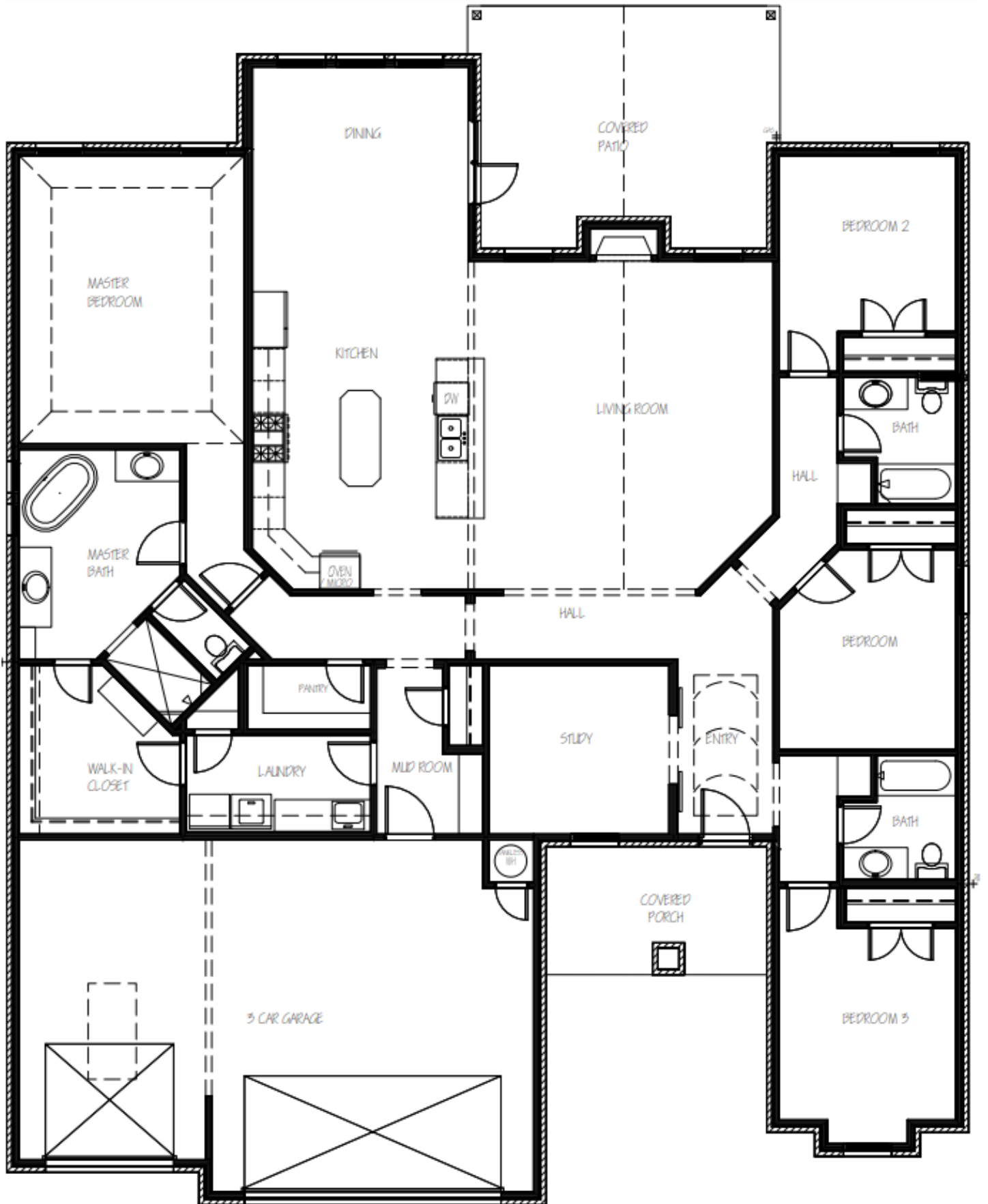
4 Bed, 3 Bath, 3 Car Garage, 2,840 Square Feet



- Open-concept living
- Cathedral ceiling in living area
- Walk-in pantry
- En-suite dual master sinks
- Extra large master closet
- Utility connected to master closet
- Sloped ceiling in master bedroom
- Precut storm shelter
- Built-in shelving and storage
- Covered front and back porch

BUILT FROM THE HEART





For more information about the Aspen floorplan,
please contact 405.696.7202 or email carla@stkhomes.com